

Sculpture depicting a fallen Gallic trumpeter (original, Hellenistic period Greece – Pergamon, c.220 BCE); Torque (2nd century BCE)

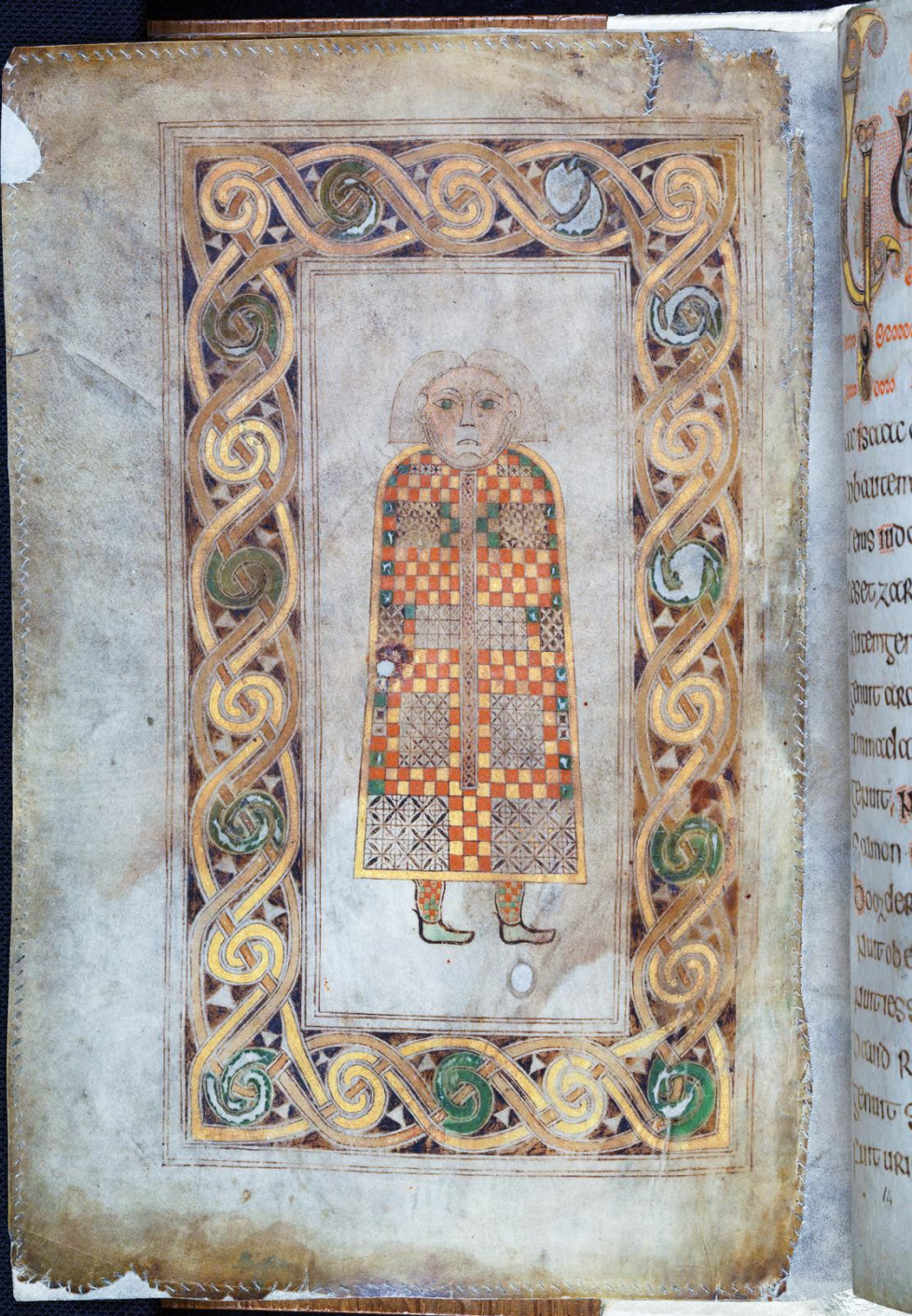


Ship burial at Sutton Hoo (England, c.625 CE)



Buckle discovered within the ship burial at Sutton Hoo (England, c.625 CE)





Painting depicting Saint Matthew within the *Book of Durrow*
(Kingdom of Northumbria, c.660 – 700 CE)

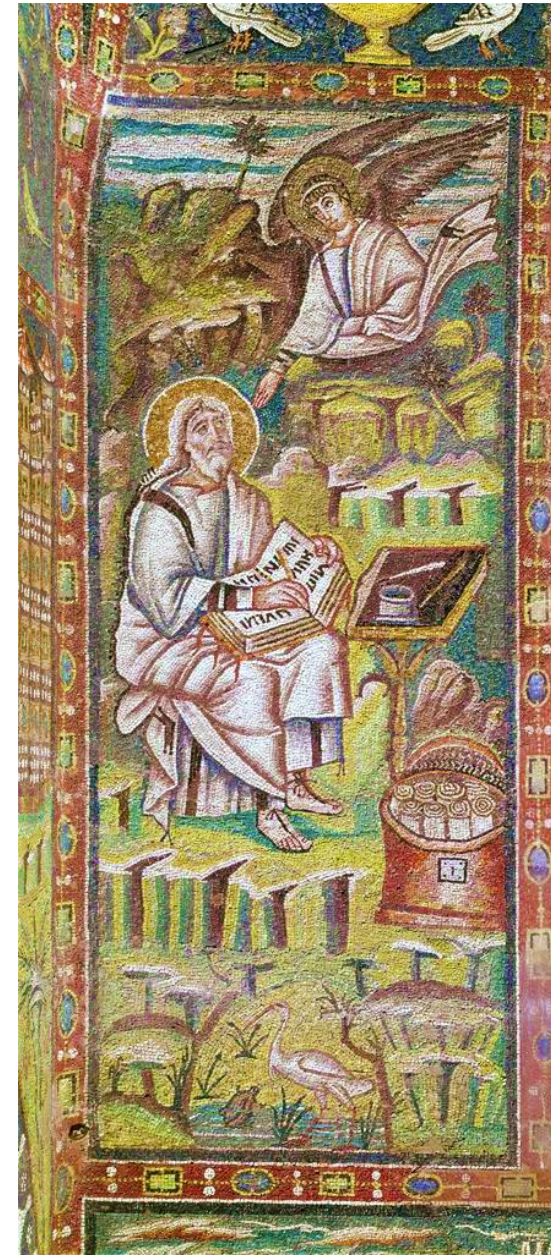
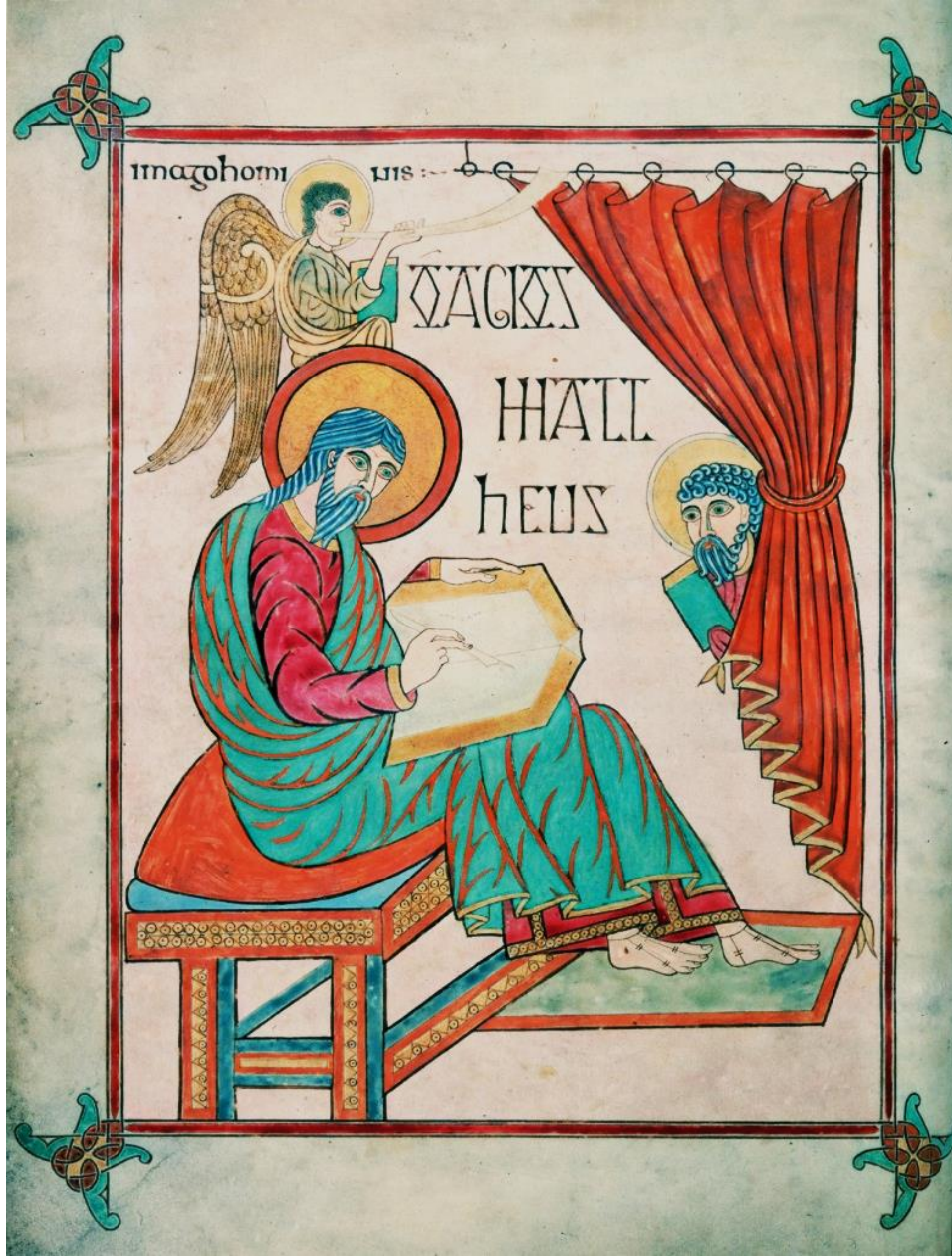
Painting depicting Saint Matthew from the *Book of Durrow* (c.675 CE);
Detail of the shoulder clasp discovered within the ship burial at Sutton Hoo (England, c.625 CE)





Painting depicting Saint Matthew the Evangelist from the *Lindisfarne Gospels* (Kingdom of Northumbria, c.715 CE)

Painting depicting Saint Matthew the Evangelist from the *Lindisfarne Gospels* (c.715 CE);
Mosaic depicting Saint Matthew the Evangelist (San Vitale, Ravenna, Italy, c.540 CE)





Painting introducing the Nativity story in the Gospel of Matthew
from the *Book of Kells* (Iona, c.800 CE)



Detail from the *Book of Kells* (c.800 CE)