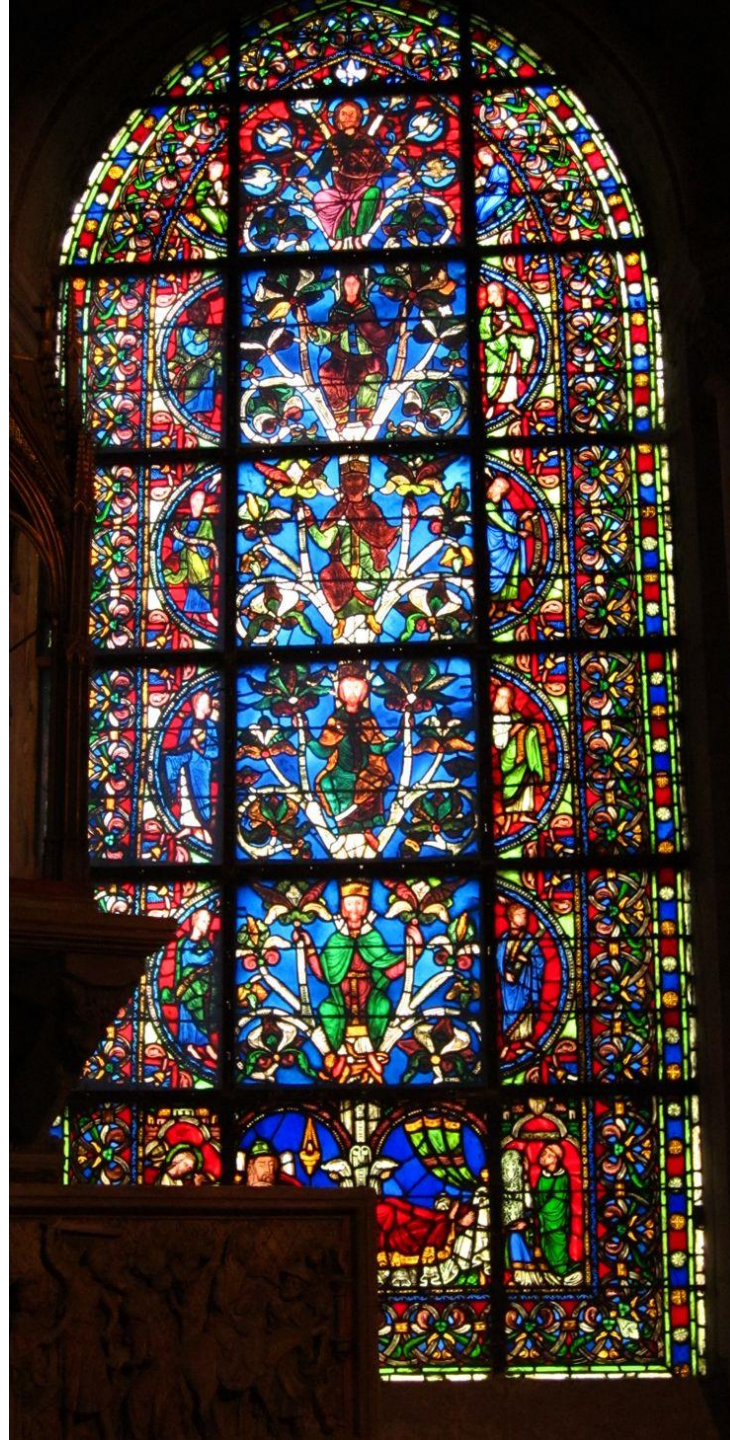
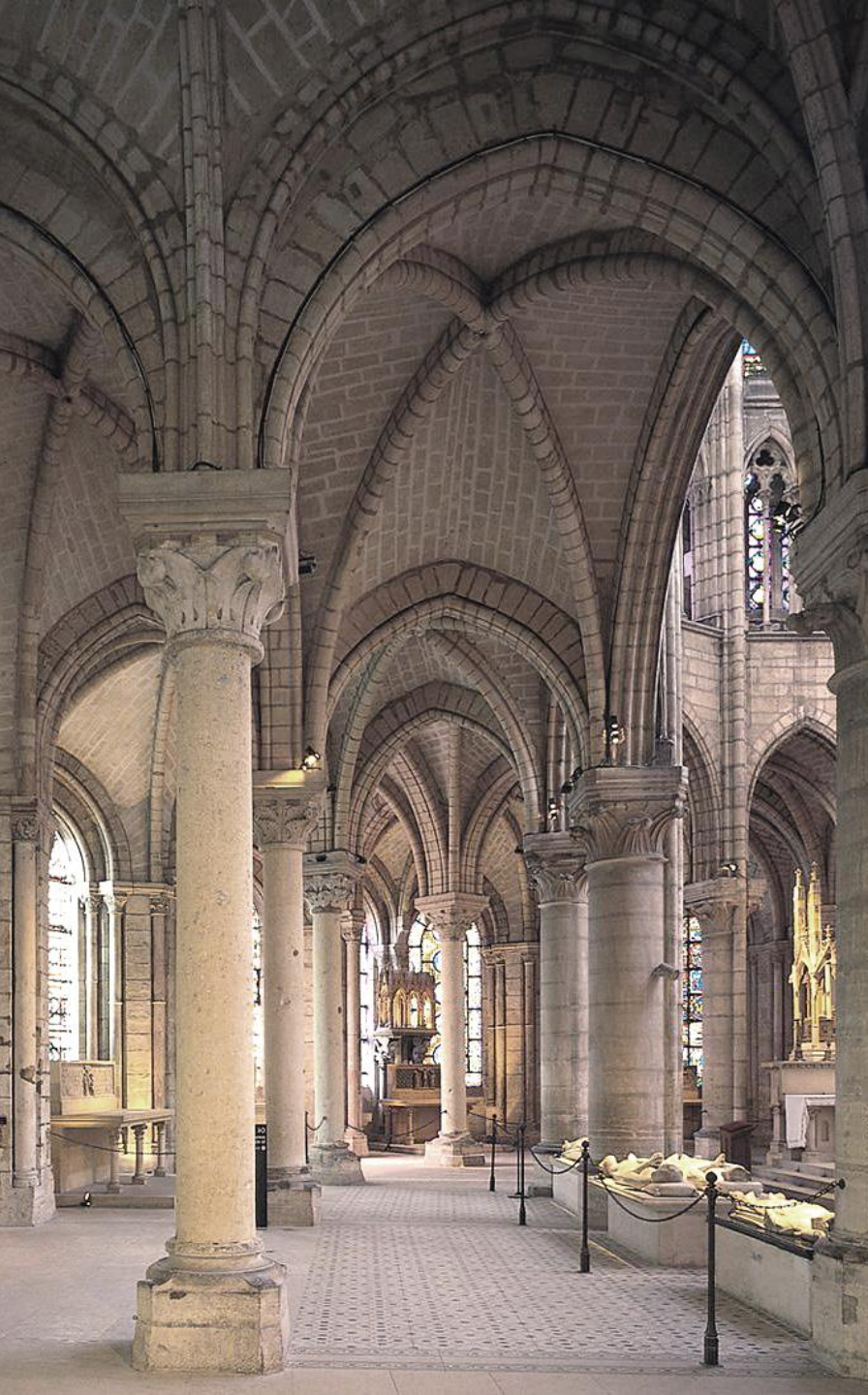


Abbey church of Saint Denis
(Paris, France, 1140-1144 CE);
Window depicting Abbot Suger of
Saint Denis

Sculpture adorning the central portal of Saint-Denis



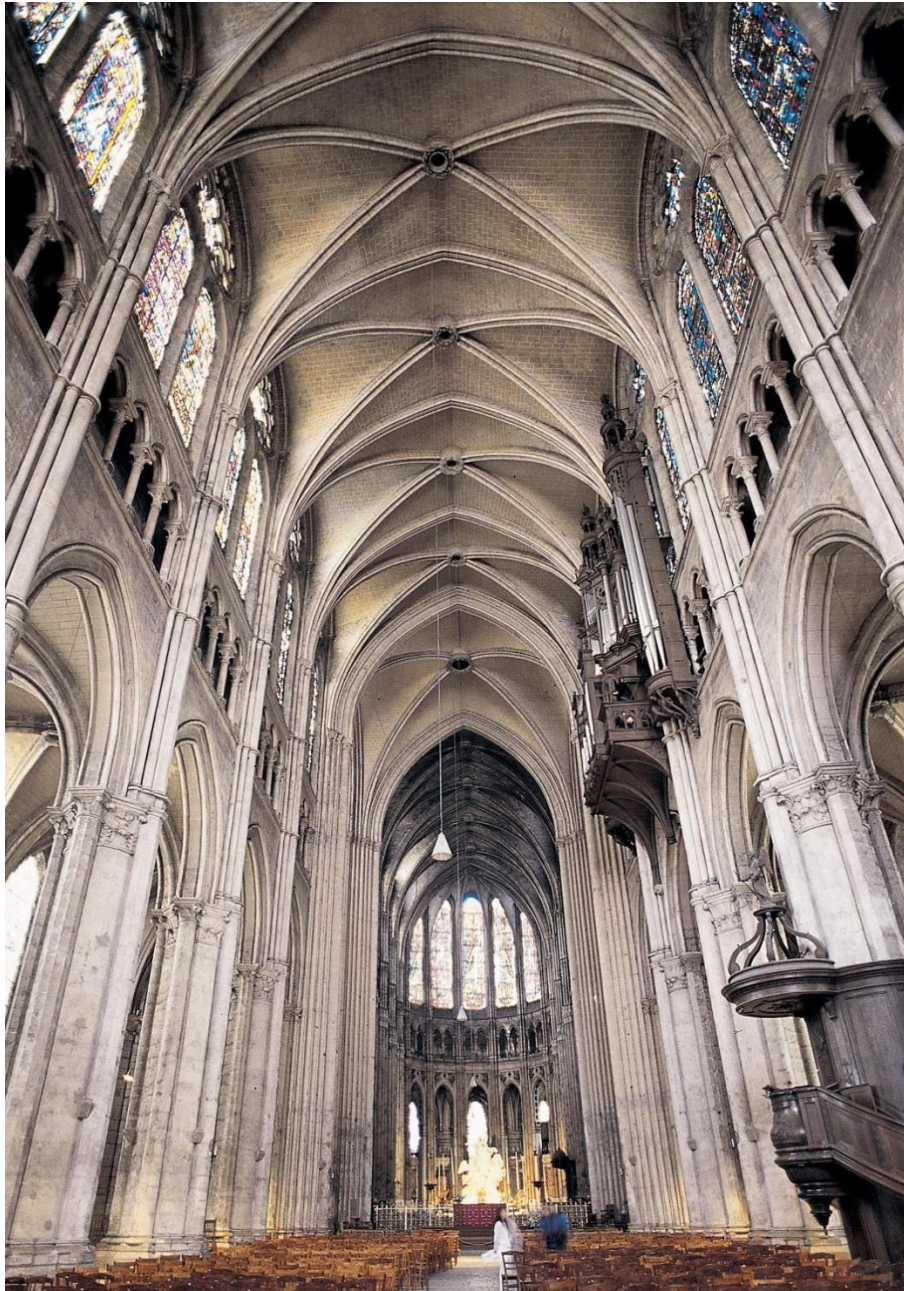


Interior of the ambulatory at Saint Denis;
Stained glass window depicting Isaiah's vision of
the 'Tree of Jesse'



Cathedral of Notre-Dame at Chartres
(12th - 13th century)

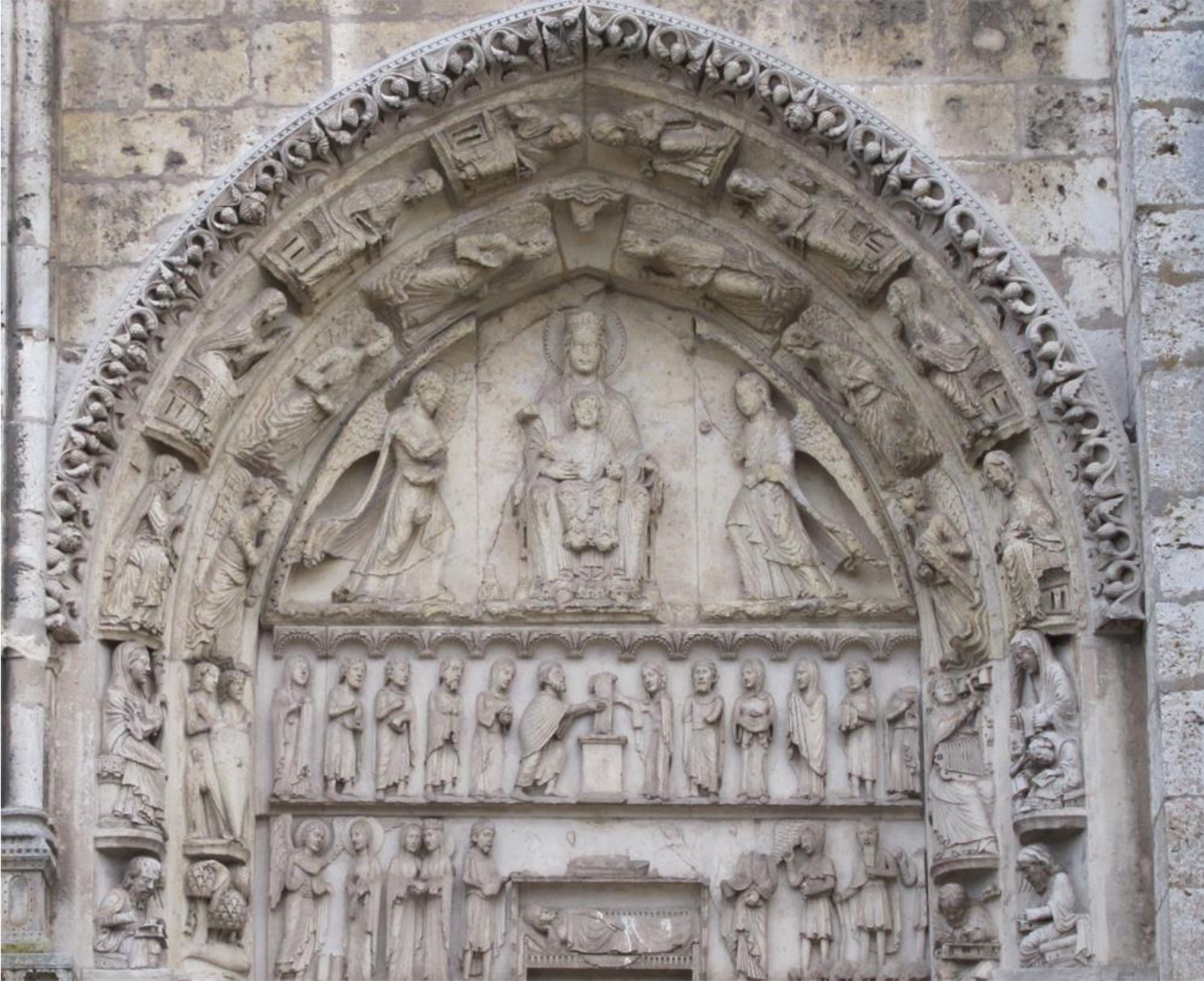
Interiors of Notre-Dame at Chartres and Santiago de Compostela (Spain, 11th century)



'Royal Portal' at Chartres Cathedral (c.1150 CE)

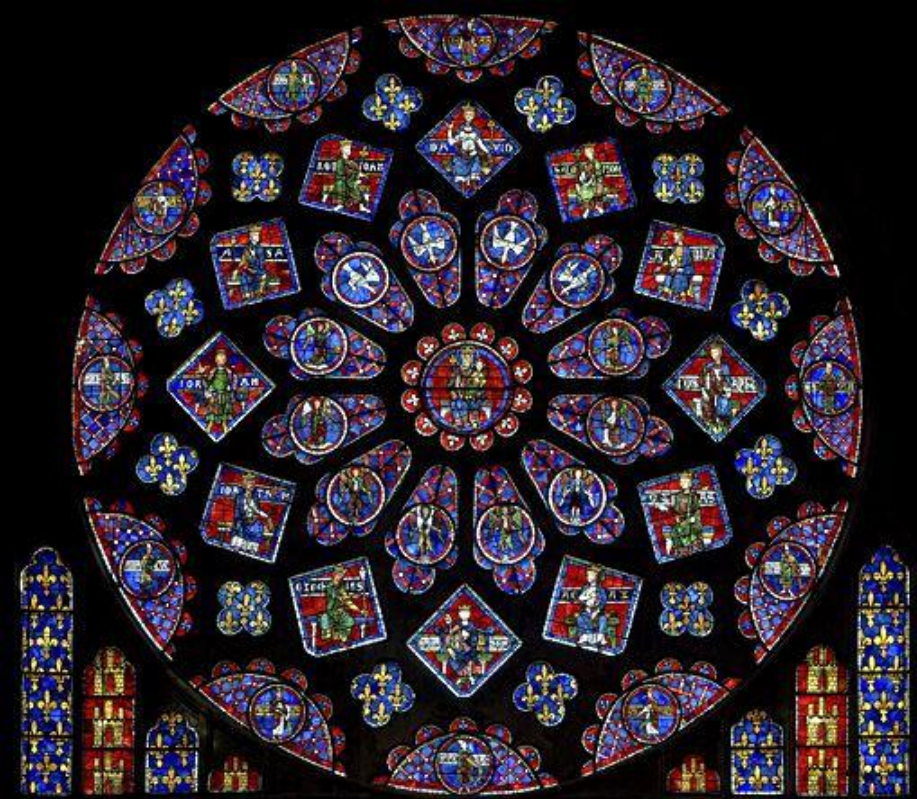


Sculpture over the right doorway of the 'Royal Portal' at Chartres

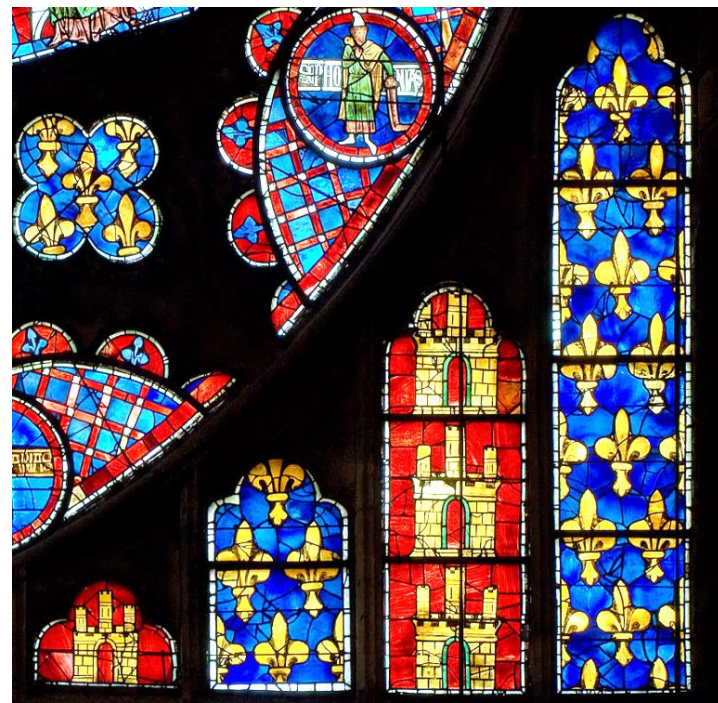
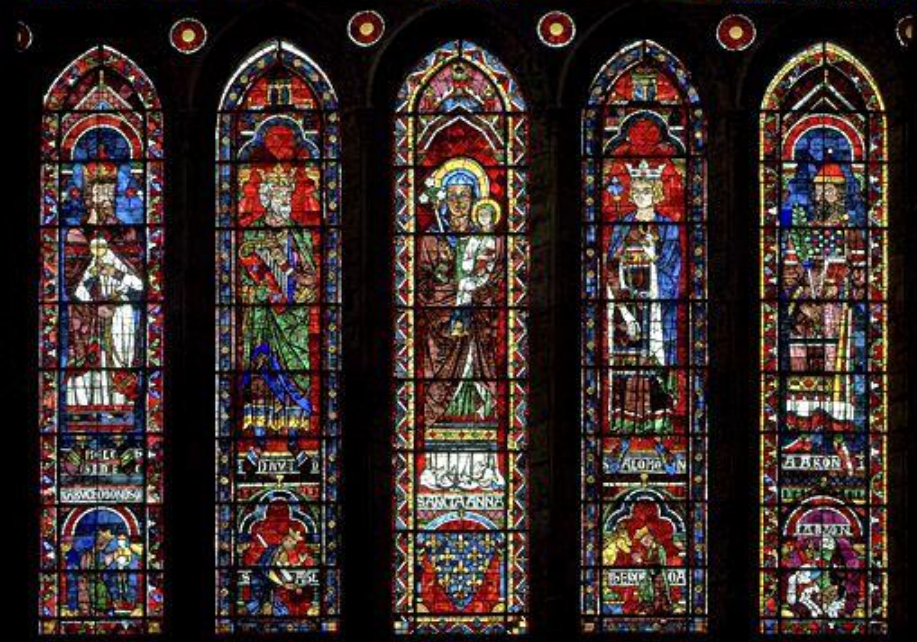


Detail of the figures within the archivolts and full view of the sculpture over the right doorway of the 'Royal Portal' at Chartres





North transept window at Chartres; Details of rose window (13th century)



Jamb sculptures from the 'Royal Portal' (c.1150) and south transept portal (c.1230) at Chartres





Façade of the Cathedral of Notre-Dame at Reims (13th century);
Detail of central portal sculpture depicting Jesus Christ crowning his mother Mary as
'Queen of Heaven'



Sculptures depicting the Annunciation and the Visitation at Reims Cathedral (c.1255, 1245, and 1230)

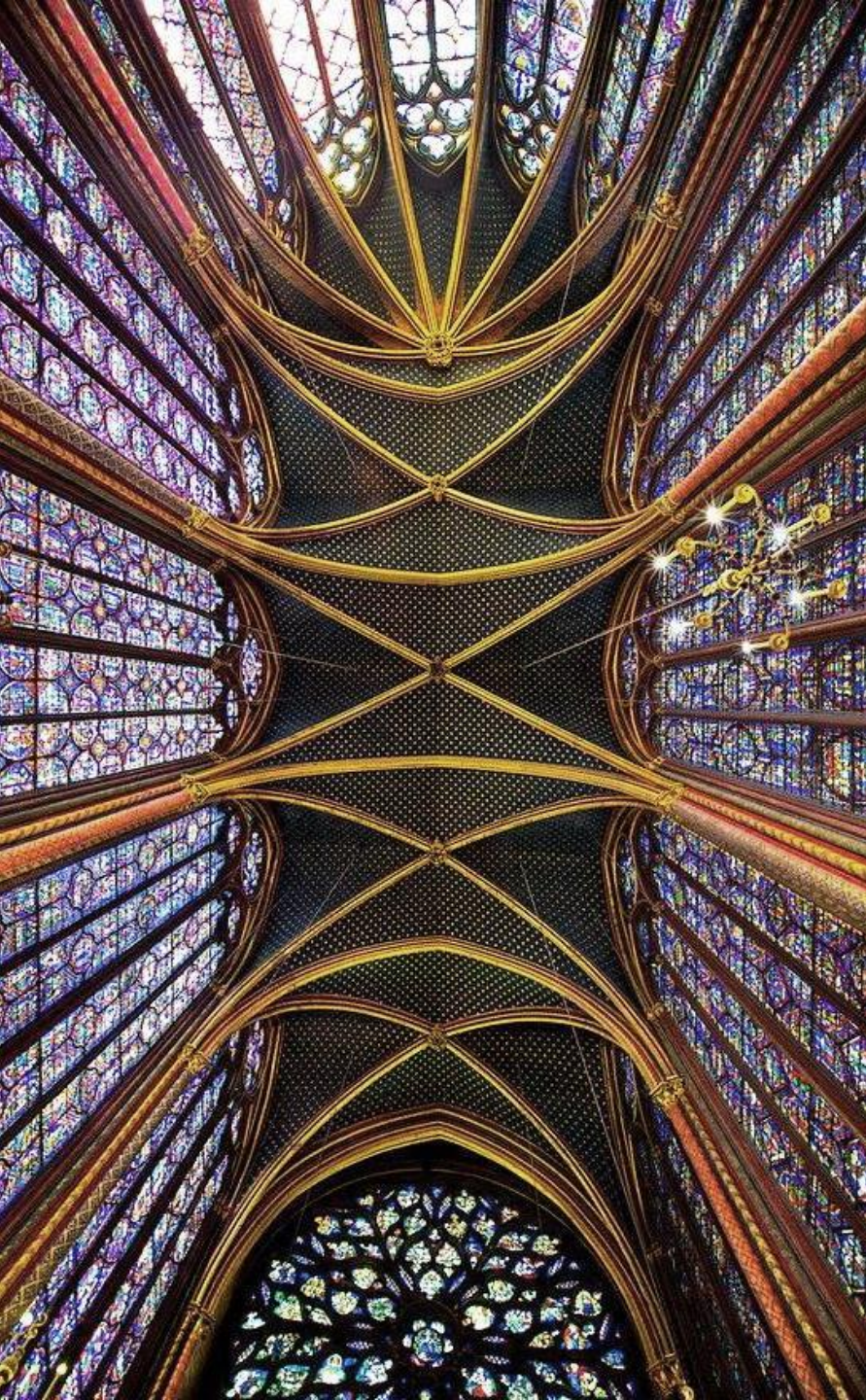




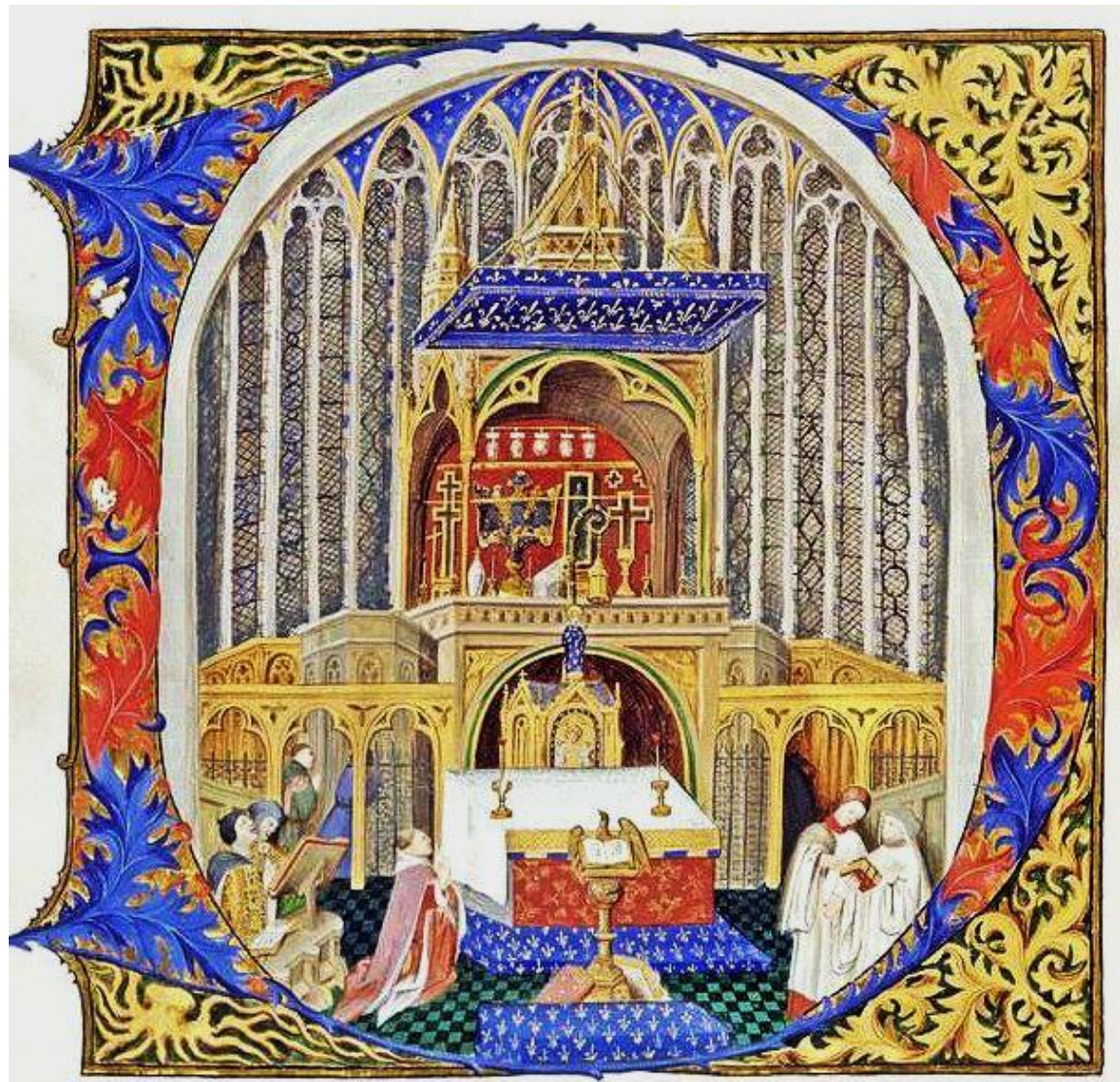
Sculpture of the 'Visitation' at Reims;
Portrait of a Roman Empress
(2nd century CE)

Sculptures adorning the façade of the Cathedral of Notre-Dame at Amiens (13th century)





Vault of 'Sainte-Chapelle' (1248); Manuscript painting depicting King Louis IX venerating the relics of Christ within the upper chapel





Manuscript painting depicting Abraham and Sarah with the three 'Visitors,'
from the *Psalter of Saint Louis* (c.1260)



Manuscript painting depicting God creating the Universe, from a 'Moralized Bible'
(c.1230)